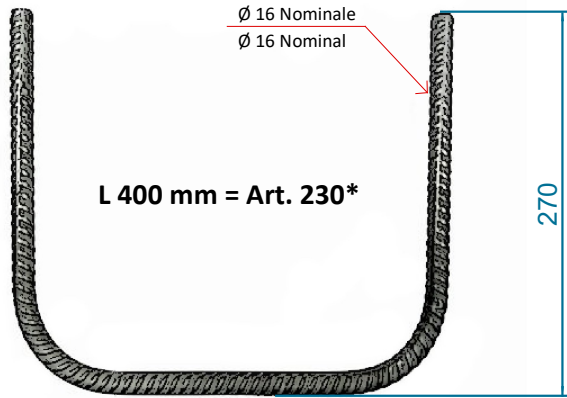




VIA FERRATA

GRADINO NERVATO Ø 16 - acciaio inox AISI 304
RIBBED STEMPLER RUNG Ø 16 - Stainless steel AISI 304
ÉCHELON FILETÉ Ø 16 – inoxydable AISI 304
PASO ACANALADO Ø 16 - inox AISI 304



Leggere le istruzioni prima dell'uso
 Read instructions before use
 Lire les instructions avant utilisation
 Leer las instrucciones antes de su uso

Dopo la resinatura, non toccare più l'ancoraggio piazzato e utilizzarlo non prima che siano trascorse 24 ore, meglio ancora se non almeno dopo 2/3 giorni (dipende dalla temperatura ambiente...). Rispettare comunque le indicazioni stabilite dalla fabbrica della resina utilizzata.

After the resin, do not touch the anchor and use it no earlier than 24 hours, even better if after 2/3 days (dependent on ambient temperature...). Please, comply with the directions set by the factory of the resin used.

Después de aver colocado el anclaje con la resina, no toque el anclaje y utilizarlo no antes de 24 horas, aún mejor si no menos después de 2/3 días (dependiendo de la temperatura ambiente...). Respetar las instrucciones de la resina utilizada, como escrito en las hoja tecnicas del producto.

Après la résine, ne touchez pas l'ancre et l'utiliser placé au plus tôt 24 heures, encore mieux si pas moins après 2/3 jours (en fonction de la température ambiante...). Toujours se conformer aux orientations fixées par l'usine de la résine utilisée.

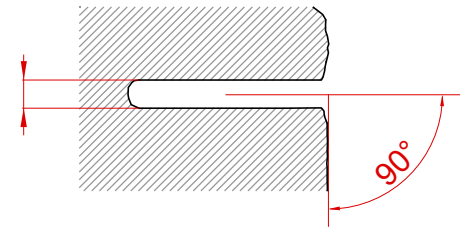
ART. 230*

INSTALLAZIONE CON RESINA
 INSTALACIÓN CON RESINA

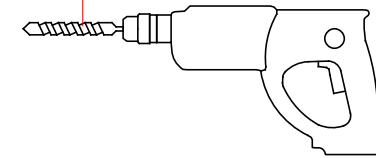
INSTALLATION WITH RESIN
 INSTALLATION AVEC RÉSINE

1

20 mm

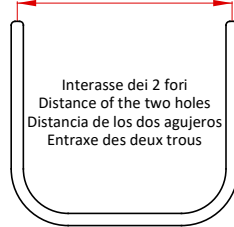


per gambo Ø 16, punta Ø 20
 for stem Ø 16, tip Ø 20
 por varilla Ø 16, punta Ø 20
 pour tige Ø 16, pointe Ø 20

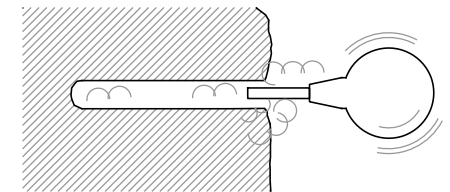
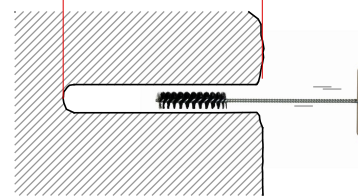


2

X = 400 mm



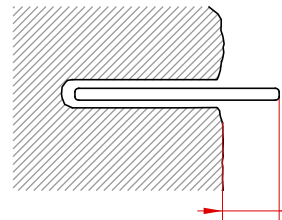
L = MIN 120 mm



3

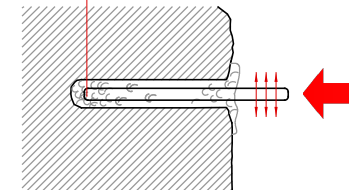
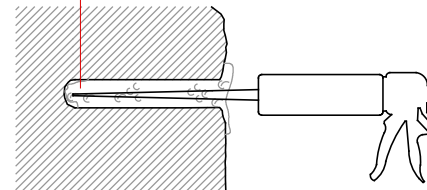
Resina bicomponente
 Two components resin
 Resina de dos componentes
 Résine à deux composants

Inserire e scuotere leggermente
 Insert and slightly shake
 Insérer et serrer légèrement
 Inserte y agitar ligeramente



OK!

Prova
 Test
 Prueba



MAX 150 mm

4

OK!

Piazzamento corretto : ORIZZONTALE!!!
 Correct placement: HORIZONTAL!!!

Le placement correct: HORIZONTAL!!!
 La correcta colocación: HORIZONTAL!!!

