



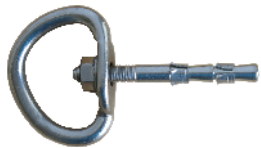
ANELLOX + HANG FIX

Ancoraggio - acciaio inox AISI 316L
Anchor - Stainless steel AISI 316L
Anclajes - inoxidable AISI 316L
Amarrage - inox AISI 316 L

MADE IN ITALY



CONFORMITA'
EN 795: 2012 Type A
EN 959:2018



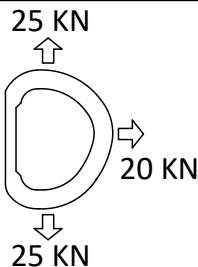
Art. 189 - Anellox Ø 8 mm +
 Art. 122 - Hang Fix inox M8L
 Peso Weight Peso Poids 103 g
 M 8 x 78 mm



Art. 189 - Anellox Ø 8 mm +
 Art. 149 - Hang Fix inox M8XL
 Peso Weight Peso Poids 112 g
 M 8 x 100 mm

Utilizzare Hang Fix solo in caso di rocce compatte (come calcare massiccio-dolomia) e non in caso di rocce tenere (per esempio l'arenaria) o troppo dure come granito, quartzite.
 Use Hang Fix only in case of compact rocks (such as massif limestone, dolomite) and not in the case of soft rocks (such as sandstone) or too hard such as granite, quartzite.
 Utilise Hang Fix solo en caso de rocas compactas (como piedra caliza maciza, dolomita) y no en el caso de la roca blanda (por ejemplo arenisca) o mas dura como granito, quartzite.
 Utiliser Hang Fix uniquement en cas de roches compact (comme massif calcaire, dolomite) et non dans le cas de roches tendres (par exemple de grès) ou trop dure, comme granite, quartzite.

Resistenza effettiva
 Effective strenght
 Resistencia efectiva
 Résistance effective



Art. 190 - Anellox Ø 10 mm +
 Art. 156 - Hang Fix inox M10C
 Peso Weight Peso Poids 119 g
 M 10 x 66 mm



Art. 190 - Anellox Ø 10 mm +
 Art. 215 - Hang Fix inox M10AL
 Peso Weight Peso Poids 132 g
 M 10 x 86 mm



Art. 190 - Anellox Ø 10 mm +
 Art. 157 - Hang Fix inox M10L
 Peso Weight Peso Poids 130 g
 M 10 x 86 mm



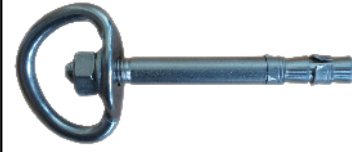
Art. 190 - Anellox Ø 10 mm +
 Art. 150 - Hang Fix inox M10XL
 Peso Weight Peso Poids 145 g
 M 10 x 110 mm



Art. 583 - Anellox Ø 12 mm +
 Art. 109 - Hang Fix inox M12C
 Peso Weight Peso Poids 150 g
 M 12 x 74 mm

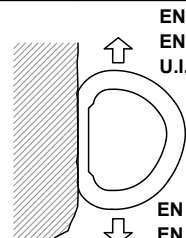
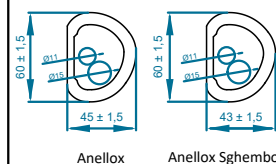


Art. 583 - Anellox Ø 12 mm +
 Art. 114 - Hang Fix inox M12L
 Peso Weight Peso Poids 170 g
 M 12 x 100 mm



Art. 583 - Anellox Ø 12 mm +
 Art. 224 - Hang Fix inox M12XL
 Peso Weight Peso Poids 190 g
 M 12 x 120 mm

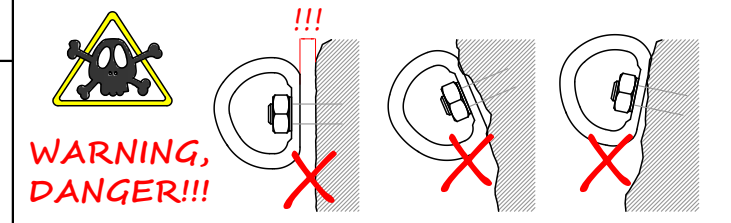
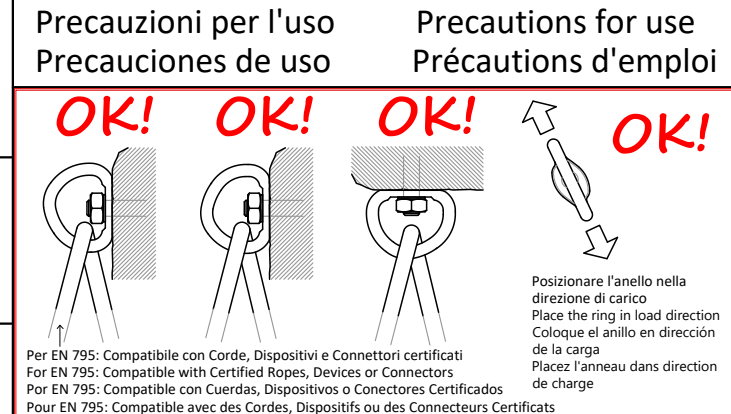
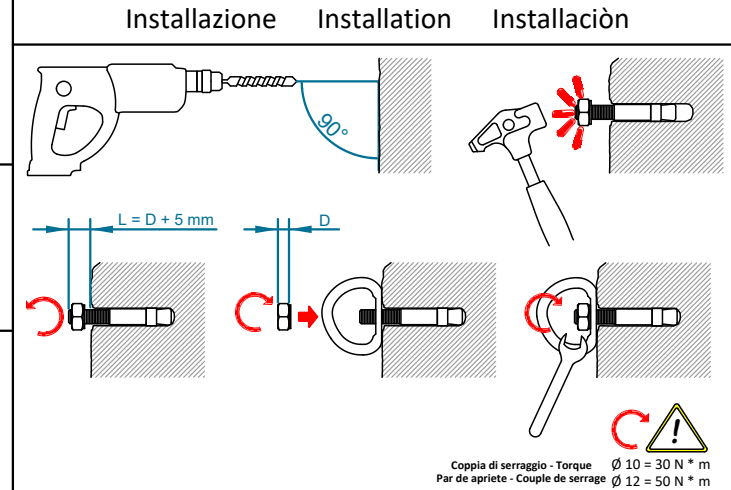
Requisiti resistenza test statico
 Resistance requirements static test
 Exigencias de resistencia prueba estatica
 Exigences de résistance d'essai statique



EN 795: 2012 12 KN
EN 959: 2018 25 KN
U.I.A.A. 123-2 25 KN

EN 795: 2012 12 KN
EN 959: 2018 15 KN
U.I.A.A. 123-2 20 KN

EN 795: 2012 12 KN
EN 959: 2018 25 KN
U.I.A.A. 123-2 25 KN



Resistenza effettiva test dinamici
 Dynamic test: effective strength
 Resistencia efectiva pruebas dinamica
 Résistance effective essais dynamiques

EN 795: 2012

Load direction	Peak of force (kN)	Deflection of anchor device (mm)	Displacement of anchor point (mm)
A	9.4	0	0
B	9.5	0	0
C	9.0	0	0