



# ANELLOX SGHEMBO + HANG FIX

**Ancoraggio - acciaio inox AISI 316L**  
*Anchor - Stainless steel AISI 316L*  
*Anclajes - inoxidable AISI 316L*  
*Amarrage - inox AISI 316 L*

**CE 2008** EN 795: 2012 Type A  
 conformità EN 959:2007

**MADE IN ITALY**



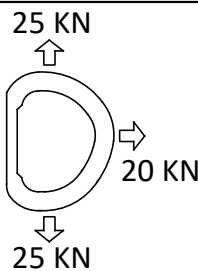
**Art. 593 - Anellox Sghembo Ø 8 mm + Art. 122 - Hang Fix inox M8L**  
 Peso Weight Peso Poids 103 g  
 M 8 x 78 mm



**Art. 593 - Anellox Sghembo Ø 8 mm + Art. 149 - Hang Fix inox M8XL**  
 Peso Weight Peso Poids 112 g  
 M 8 x 100 mm

Utilizzare Hang Fix solo in caso di rocce dure e compatte (come granito-calcare massiccio-dolomia) e non in caso di rocce tenere (per esempio l'arenaria).  
 Use Hang Fix only in case of hard and compact rocks (such as granite, massif limestone, dolomite) and not in the case of soft rocks (such as sandstone).  
 Utilise Hang Fix solo en caso de rocas duras y compactas (como piedra caliza maciza, granito, dolomita) y no en el caso de la roca blanda (por ejemplo arenisca).  
 Utiliser Hang Fix uniquement en cas de roches dures et compact (comme le granit - massif calcaire - dolomite) et non dans le cas de roches tendres (par exemple de grès).

**Resistenza effettiva**  
**Effective strength**  
**Resistencia efectiva**  
**Résistance effective**



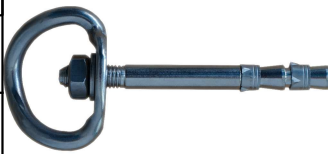
**Art. 571 - Anellox Sghembo Ø 10 mm + Art. 156 - Hang Fix inox M10C**  
 Peso Weight Peso Poids 119 g  
 M 10 x 66 mm



**Art. 571 - Anellox Sghembo Ø 10 mm + Art. 215 - Hang Fix inox M10AL**  
 Peso Weight Peso Poids 132 g  
 M 10 x 86 mm



**Art. 571 - Anellox Sghembo Ø 10 mm + Art. 157 - Hang Fix inox M10L**  
 Peso Weight Peso Poids 130 g  
 M 10 x 86 mm



**Art. 571 - Anellox Sghembo Ø 10 mm + Art. 150 - Hang Fix inox M10XL**  
 Peso Weight Peso Poids 145 g  
 M 10 x 110 mm



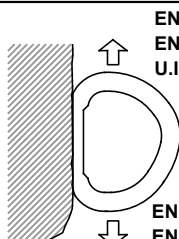
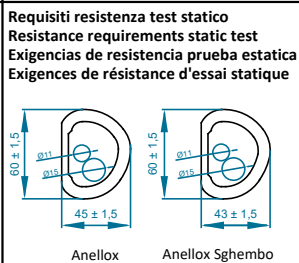
**Art. 582 - Anellox Sghembo Ø 12 mm + Art. 109 - Hang Fix inox M12C**  
 Peso Weight Peso Poids 150 g  
 M 12 x 74 mm



**Art. 582 - Anellox Sghembo Ø 12 mm + Art. 114 - Hang Fix inox M12L**  
 Peso Weight Peso Poids 170 g  
 M 12 x 100 mm



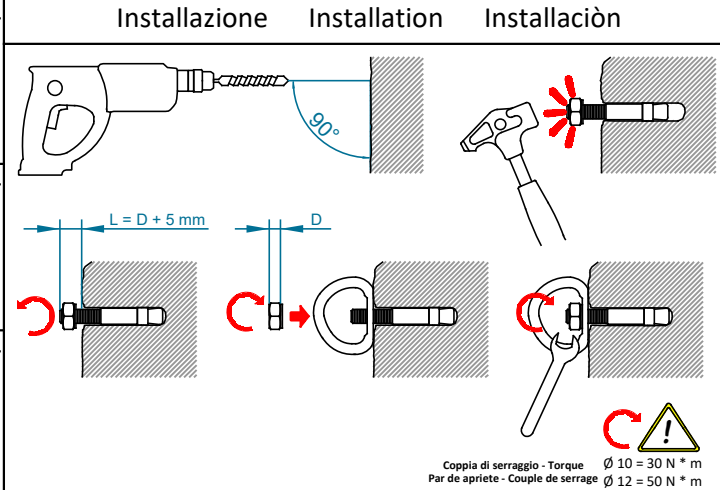
**Art. 582 - Anellox Sghembo Ø 12 mm + Art. 224 - Hang Fix inox M12XL**  
 Peso Weight Peso Poids 190 g  
 M 12 x 120 mm



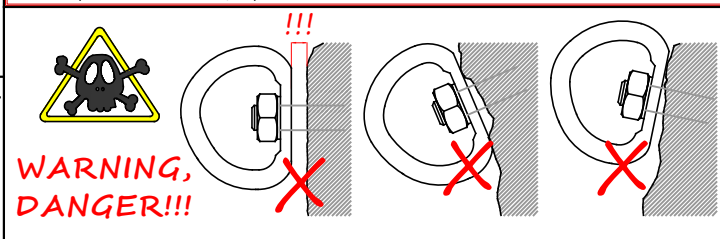
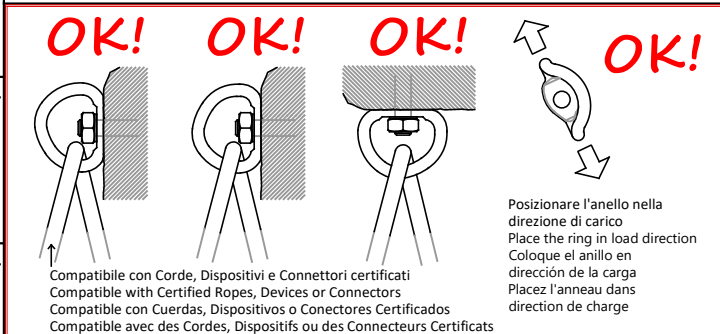
**EN 795: 2012 12 KN**  
**EN 959: 2007 25 KN**  
**U.I.A.A. 123-2 25 KN**

**EN 795: 2012 12 KN**  
**EN 959: 2007 15 KN**  
**U.I.A.A. 123-2 20 KN**

**EN 795: 2012 12 KN**  
**EN 959: 2007 25 KN**  
**U.I.A.A. 123-2 25 KN**



**Precauzioni per l'uso**  
**Precauciones de uso**  
**Precautions for use**  
**Précautions d'emploi**



**Resistenza effettiva test dinamici**  
**Dynamic test: effective strength**  
**Resistencia efectiva pruebas dinamica**  
**Résistance effective essais dynamiques**  
**EN 795: 2012**

Load direction	Peak of force (KN)	Deflection of anchor device (mm)	Displacement of anchor point (mm)
A	9.4	0	0
B	9.5	0	0
C	9.0	0	0